



# KÉGRESSE-HINSTIN

■ ENDLESS BAND DRIVING ■ ATTACHMENT



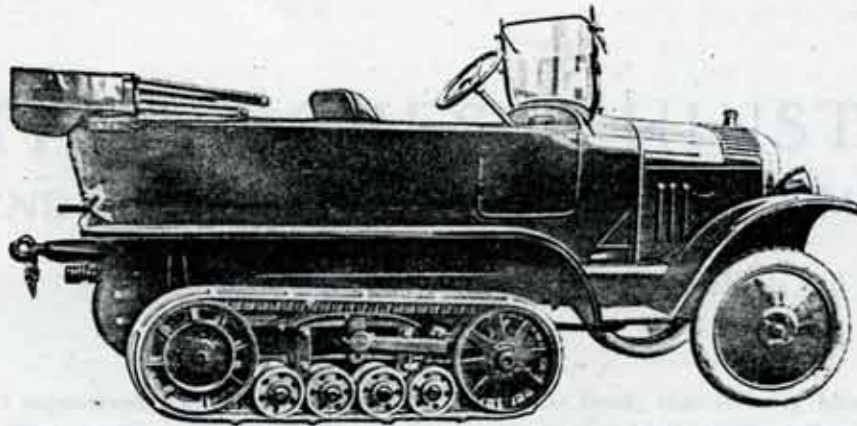
ANDRÉ CITROËN

CONSTRUCTING-ENGINEER

115 à 143, Quai de Javel, Paris.



ANDRÉ CITROËN



## SPECIFICATION OF CITROËN KÉGRESSE CAR

**ENGINE.** — 4 cylinder Monobloc — 68  $\frac{m}{m}$  Bore by 100  $\frac{m}{m}$  Stroke. R. A. C. Rating 11.4 HP. 3 point suspension Electric Starter.

**RADIATOR.** — Extra large capacity. Thermo-Syphon circulation. For tropical climates where water is very scarce a special "Colonial type" condensing radiator can be fitted as an extra.

**IGNITION.** — High tension magneto.

**CARBURETTER.** — Solex.

**PETROL FEED.** — Gravity from tank in scuttle.

**CLUTCH.** — Single disc ferodo faced.

**GEARBOX.** — Unit construction with engine. 3 speeds forward and one reverse. Central change.

**BACK AXLE.** — Incorporating 2 speed gear operated from driver's seat giving, in conjunction with gear box, 6 forward speeds and 2 reverse.

CITROËN chevron spiral bevel specially strengthened.

Differential locking device operated from driver's seat.

**STEERING.** — Worm and segment with special connection automatically operating brakes on driving pulleys giving a very small turning radius.

**BRAKES.** — One on transmission, one on endless belt driving pulleys. Both of internal expanding type.

**FRONT WHEELS.** — Michelin disc. 710 x 90 Michelin cablé tyres.

**FRONT SPRINGS.** — Quarter elliptic.

**ELECTRICAL INSTALLATION.** — Dynamo, accumulators, cutout, 5 lamps, horn.

**KÉGRESSE-HINSTIN ATTACHMENT.** — As described in the following pages, of two types :

- (a) "General Purpose"
- (b) "Snow".

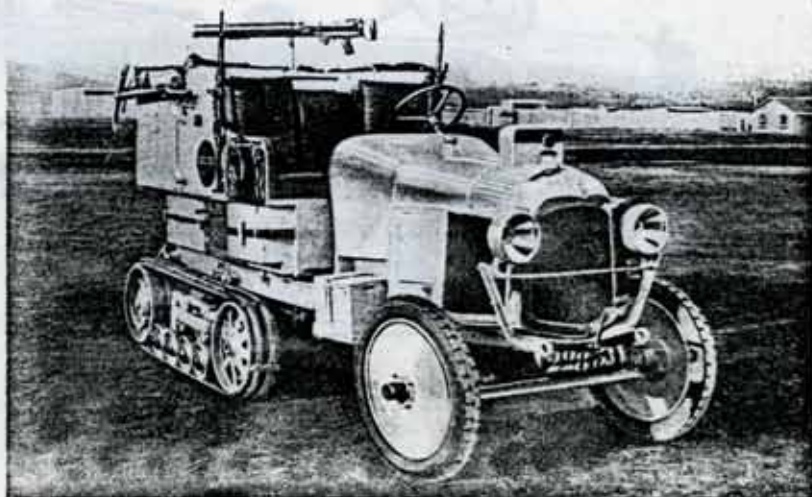
**CHASSIS.** — Two types : straight frame  
(a) Short wheelbase 6 ft. 6 inches.  
(b) Long wheelbase 7 ft. 5 inches.

**BODIES.** — 1. Torpedo-Van Body. To carry four persons including driver ; turn over front seat gives access to back seats, complete with hood. Convertible to van body by removing back seats, fitted with tail board. Painted blue, highly finished.

2. Torpedo-Van Body. To carry eight persons including driver (two in front seats) (three on each of two LONGITUDINAL seats at the back). Hood and side curtains.

3. Platform Body with Torpedo front to seat two, wind screen. Platform at back approx. 57" long by 44" wide allowing for fitting various types of body. Grey protecting paint, varnished.

ANDRÉ CITROËN



A Photograph of one of the actual CITROËN-KÉGRESSE CARS which crossed and recrossed the Great Sahara Desert.

## THE CITROËN KÉGRESSE CAR

Manufactured in the famous Citroën Works, which have the largest output of European Cars-150 Automobiles per day.

### ON ROADS.

The CITROËN KÉGRESSE car will average 20 miles per hour over long distances with a maximum speed of 25 miles per hour. Petrol consumption under these conditions is about 18 miles per gallon.

It is comfortable to ride in and can be used as an ordinary pleasure car.

### ACROSS COUNTRY.

This car is particularly adapted for cross-country work; it will negotiate with ease marshy ground, mud, loose shifting sand, broken or stony ground, steep banks, ditches, and snow. It will climb steps and apparently impossible obstacles and gradients.

It leaves the road and proceeds to travel across country *without any change whatsoever being made to the vehicle.*

### AS A TRACTOR.

A special towing arrangement is fitted as standard and gross loads of from 1 to 4 tons can satisfactorily be handled, the load varying according to the nature of the ground traversed.

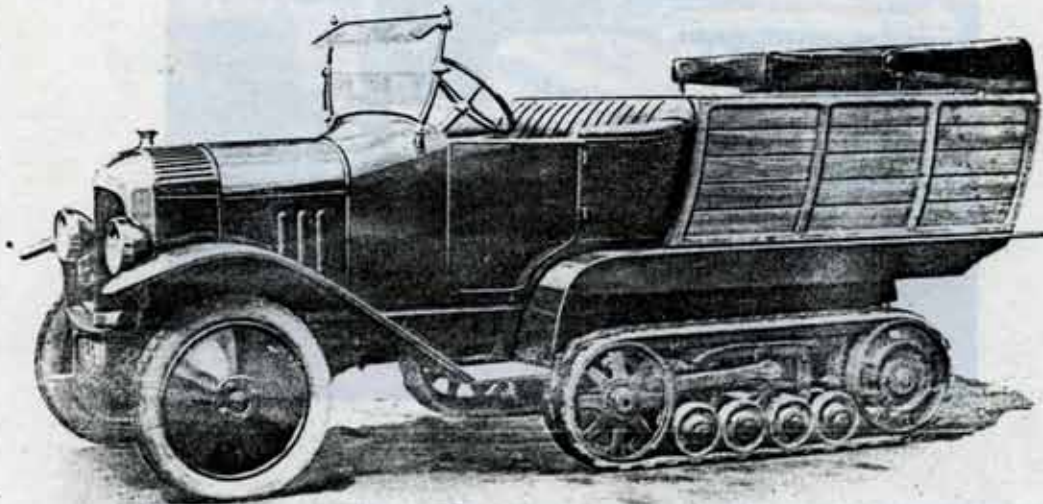
The machine can also be used with very good results for hauling agricultural implements.

### PRICE.

Initial price and maintenance costs are exceptionally low.

ANDRÉ CITROËN

ANDRÉ CITROËN



THE CITROËN KÉGRESSE CAR

Manufactured in the Citroën Works which have the highest output in Europe for the Kégresse car.

ON ROADS

The Citroën Kégresse car is the only one which can be used on all roads and in all countries.

ANDRÉ CITROËN

CONSTRUCTING ENGINEER

143, Quai de Javel, 143

ACROSS COUNTRY

PARIS

REGISTRE DE COMMERCE SEINE N° 78-398

Telegram. ANDRECIT

PRICES

Special saving arrangements if listed in the Kégresse car is made according to the nature of the ground traversed.