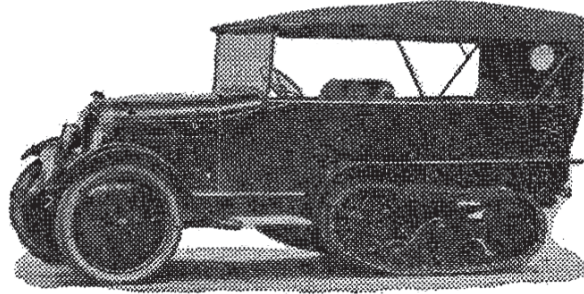


THE CITROËN-KÉGRESSE



What it is—

A Standard 13-40 Citroën Car which has been rendered ubiquitous by the substitution of endless bands for the normal back wheels. None of the refinements associated with the modern car design has been sacrificed to produce a vehicle of such varied uses.

We can fit any type of body to this chassis.

What it can do—

“On the Road.”

It will take you along the road at a speed of from 25 to 30 m.p.h. as comfortably as an average car.

It will draw a six-ton trailer at varying speeds according to the types of road, none of which are too bad for the Kégresse.

“On the Moors.”

A “Cadogan” shooting brake body on this chassis will take you and your guests in comfort up to the butts, and with a “Cadogan” trailer in tow will also take your loaders, dogs and lunch. At the end of the day it will bring you all back together with your game.

It will pull certainly not less than one ton across country, depending, of course, on the gradients and soil.

On Farm and Estate.

The Citroën-Kégresse, which is equipped with a powerful towing hook, will plough under circumstances in which four horses would otherwise be required.

It will also draw any type of agricultural implement.

Dunkeld Road,
Perth.
Tel. 527.