

Régistre International des Véhicules à Systeme Kegresse





Photo credits

A number of photographs used on this book are from unknown sources, if you feel an image used may be one of your own please contact us.

Régistre International des Véhicules à Systeme Kégresse

Year	Chassis	Engine	Reg.	Model	Body	Conditions	Owner	Country	Page
				P15N	closed	original	Technische museum Wien	Austria	A 1
1926	1326			P4T		unrestored	Shayne Harris	Australia	AU 1
1934	10992			P17 E	open	restored	Mahymobiles museum	Belgium	B 1
1934	10063			P17	open	restored	Mahymobiles museum	Belgium	B 2
	65			P17	open, tractor	restored		Belgium	B 3
			406	P19		restored	Royal museum of the army	Belgium	B 4
				P17		under restoring	Mr. Fonteyne	Belgium	B 5
1934	10358			P17 D	open	restored, "4 - Painted Lady"	Reynolds-Alberta museum	Canada	CAN 1
1934	10360			P17 D	open	restored "5 - Swallow Tail"	Moose Jaw Western Development Museum	Canada	CAN 2
1929				P17	open	restored	Philippe Etter, Château de Grandson	Switzerland	CH 1
1930				P17	open	restored		Switzerland	CH 2
	1155			P19	open, tractor	unrestored	unknow museum	Czech Republic	CZ 1
1933	10035			P17 C	closed	restored	Benjamin and Rüdiger Klein	Germany	D 1
				P19	open	restored	Marxzell museum	Germany	D 2
				P17	open	restored		Germany	D 3
				P17	open, new body	restored	Gassmann GmbH	Germany	D 4
1934	10592			P17 E	open, tractor	unrestored	Krybebånds Societets	Denmark	DK 1
				P10	torpedo	unrestored		Spain	E 1
1924	2261			P4 T		unrestored	MM Park France	France	F 1
1932	10976			P17	torpedo	restored	Michelin	France	F 2
				P17		restored		France	F 3
1922			942-W1	K1	open	unrestored, "Scarabée d'Or"	Citroen Automobiles	France	F 4
				P19	open	restored, C4 engine	Citroen Automobiles	France	F 5
1927	2601			P7 bis	open	unrestored	Michel Brunet	France	F 6
	11047		80578	P17 E	open	restored	Laurent Vermont Desroches	France	F 7
1923			45 W1	P4 T	open	restored	Normandy Retro Garage	France	F 8
			848 W1	P19	open	restored, C4 engine	Normandy Retro Garage	France	F 9
1931			942-W1	P19	open	restored, "Croisière Jaune"	Musée de l'automobile de la Sarthe, Le Mans	France	F 10
1929	6193			P10	open	running	Andre Prevost	France	F 11
				P17		wreck		France	F 12
				P17	open	running tractor	Andre Prevost	France	F 13

Régistre International des Véhicules à Systeme Kégresse

Year	Chassis	Engine	Reg.	Model	Body	Conditions	Owner	Country	Page
	10429			P17	closed	unrestored	Jacques Bienvenu	France	F 14
1932	11036		82669	P17 E	open, tractor	restored	Yves-Richard Chaignon	France	F 15
				P10	open, tractor		Johan Warnesson	France	F 16
1922				K1	open	unrestored, "Croissant d'Argent"	Museum of Saint Jean d'Angély	France	F 17
				P4 T	open	unrestored, "Éléphant à la Tour"	Musée national de Compiègne	France	F 18
1932			842-W1	P17	open	restored	Musée Malartre	France	F 19
			616 EM 37	P17	open, tractor	restored		France	F 20
				P19	open, tractor	unrestored	Musée des blindes, Saumur	France	F 21
				P17	open	unrestored	Claude Bouchez	France	F 22
				P19	open			France	F 23
				P4 T	open	unrestored		France	F 24
	10567			P19 B	open	unrestored	Xavier Garnier	France	F 25
				P17 E	open	unrestored	Gérard Ryngaert	France	F 26
			338 AX 84	P7 bis	open	unrestored	Louis Gay	France	F 27
1922			2283 W1	K1	open		Dreux museum	France	F 28
				P10	open		Dreux museum	France	F 29
			2515 CE 78	P17	open, tractor	restored		France	F 30
				P4 T	open	restored	Xavier Garnier	France	F 31
1931	9289	D6620	948 W1	P19 B	open	restored, C4 engine	Xavier Garnier	France	F 32
			2284 W1	P7 T	open		Louis Gay	France	F 33
				P19	open		Louis Gay	France	F 34
				P17	open, tractor		Jean Hérouard	France	F 35
				P17 E	open, tractor		Xavier Garnier	France	F 36
	9657			P17 B	open, tractor	restored	Museum in Reims	France	F 37
				P17		restored	Laurent Vermont Desroches	France	F 38
				P10		unrestored, not complet	Laurent Vermont Desroches	France	F 39
				P10		unrestored, not complet	Laurent Vermont Desroches	France	F 40
	3152			P10		unrestored, not complet	Jose Dominiguez	France	F 41
	6237			P10	Torpedo	unrestored, not complet	Brittanny	France	F 42
1932				P17	open, tractor	restored		France	F 43
			942-W1	P17	open	restored	Xavier Garnier	France	F 44
				P7 T	open, tractor		Citroen Automobiles	France	F 45
				P17	open, tractor	unrestored	Luois Gay	France	F 46
				P17	open	unrestored	Jacques Bienvenu	France	F 47
				P10		unrestored		France	F 48
				P7 T		Wreck		France	F 49
				P 20 R	bus	restored		France	F 50
				P4 T		unrestored		France	F 51
				K1	long chassis	unrestored		France	F 52
				K1	long chassis	unrestored		France	F 53

Régistre International des Véhicules à Systeme Kégresse

Year	Chassis	Engine	Reg.	Model	Body	Conditions	Owner	Country	Page
	7239	153204		K1 neige	short chassis	unrestored		France	F 54
				P10		unrestored	Antonie Momo	France	F 55
				P17		unrestored	Maxence Lebourg	France	F 56
				P15 N		unrestored		France	F 57
				P14		unrestored		France	F 58
				P16		unrestored		France	F 59
1932	19483			P19 B	open, tractor	restored		France	F 60
1934	10359		5602 W1	P17 D	open, tractor	restored, "1 - Dinky Skipper"	Marie and Étienne Christian	France	F 61
1934	10356			P17 D	open, tractor	unrestored "2 - Orange Tip"	Xavier Garnier	France	F 62
1934	10357			P17 D	open, tractor	unrestored "3 - Gatekeeper"	Marie and Étienne Christian	France	F 63
1931				P19	open, tractor	restored	Laurent Vermont Desroches	France	F 64
				P17	open, tractor	restored		France	F 65
			5229 VL 45	P17 E	open, tractor	restored		France	F 66
				P17	open, tractor	restored		France	F 67
1930	7033			P17		unrestored, not complet	Marc Coullard	France	F 68
				P19		restored	Jean Louis Duverger	France	F 69
				P14 / P17		rolling chassis	Musée Automobile de la Commanderie	France	F 70
				P17	open, tractor			France	F 71
			7204 BK 33	P17	open	original	Salles Pompier	France	F 72
1932	9549			P17	open, tractor	restored	MM Park France	France	F 73
1931	9128			P17 B	open, tractor	unrestored	MM Park France	France	F 74
				P17		restored	Maxence Lebourg	France	F 75
				P17		wreck	Xavier Garnier	France	F 76
				P17		restored	Mr. Verdun	France	F 76
				P17	open, C6 engine	running	Bruno Kegresse	France	F 77
1929			74391	P10	open	restored	L'Atelier de Valentin	France	F 78
1930	7268			P17		rolling chassis	Dominique Bouchard	France	F 79
				K1	open	restored	Michel Brunet	France	F 80
				P17	open, tractor	unrestored	Musée des blindes, Saumur	France	F 81
1932	7100		268 J 25	P17	open	unrestored		France	F 82
1929	-			P17		unrestored, tractor	Aymeric Houzet	France	F 83
				P17		unrestored, not complet		France	F 84
				K1		unrestored	MM Park France	France	F 85
1931	8917			P19 B	open	under restoration	MM Park France	France	F 86
1929	6149			P 10		unrestored, wreck	Benoît Larue	France	F 87
				K1		unrestored, wreck	Xavier Garnier	France	F 88
				P10		unrestored	MM Park France	France	F 89
				P19	Torpedo	under restoration	Xavier Garnier	France	F 90
				P17	open, tractor	unrestored		France	F 91
				P17		unrestored	Laurent Vermont Desroches	France	F 92

Régistre International des Véhicules à Systeme Kégresse

Year	Chassis	Engine	Reg.	Model	Body	Conditions	Owner	Country	Page
				P19	closed	unrestored		France	F 93
				P17		under restoration		France	F 94
				P17		unrestored		France	F 95
			79866	P17	torpedo	unrestored		France	F 96
				P17	torpedo	restored		France	F 97
			76568	P17	torpedo	restored	L'Atelier de Valentin	France	F 98
				P17	open	restored	Sylvian Tardivat	France	F 99
				P17	open	under restoration		France	F 100
	11411			P17	open	restored	Gills Martel	France	F 101
1929			SM 7802	P10	torpedo	restored	National Motor Museum, Drumlanrig Castle	Great Britain	GB 1
				unknow			Museum in Yorkshire	Great Britain	GB 2
	11173			P17 E	Shooting brake	restored	William Balfour	Great Britain	GB 3
1929	7095		TS 9379	P17	Shooting brake	restored	Alan Stewart	Great Britain	GB 4
1924	4392			P7 bis		unrestored	Anthony Buxton	Great Britain	GB 5
1930				P17		unrestored	Anthony Buxton	Great Britain	GB 6
			VV 2034	P10	open	restored		Great Britain	GB 7
				P4 T		unrestored, wreck		Great Britain	GB 8
				P17	open	restored	The history on wheels museum	Great Britain	GB 9
1934	10353			P17 D	touring		Kevin Wheatcrofts	Great Britain	GB 10
1930	7218			P17	closed	restored	Kevin Wheatcrofts	Great Britain	GB 11
				P17	open, tractor	restored		Great Britain	GB 12
				P17	open, tractor	unrestored		Great Britain	GB 13
				P15 N	closed	unrestored	Skógar Museum	Iceland	IS 1
				P15 N	closed	unrestored, wreck	Icelandic Road Museum	Iceland	IS 2
	10561			P17 E		unrestored, wreck	Henrik Rosenlid	Norway	N 1
				P17		unrestored	Henrik Rosenlid	Norway	N 2
	10995			P17		unrestored, wreck	Gunnar Thomassen	Norway	N 3
				P17		unrestored, wreck	Gunnar Thomassen	Norway	N 4
				P17		unrestored	Knud Hetlelid	Norway	N 5
				P17	open, tractor		?	Norway	N 6
			WL-171	P17		restored		Holland	NL 1
1929				P10	open	restored	Bruce Williams	New Zeland	NZ 1

Régistre International des Véhicules à Systeme Kégresse

Year	Chassis	Engine	Reg.	Model	Body	Conditions	Owner	Country	Page
1928				P19		Wreck	Sebastian Draga	Poland	PL 1
				P17	open, tractor	restored	Polish Army Museum	Poland	PL 2
1929				P19	open, tractor	restored.....	Tampa Bay Automobile museum	USA	USA 1
				P7 bis	open	restored		USA	USA 2
				P17	open, tractor	restored		USA	USA 3

Régistre International des Véhicules à Systeme Kégresse

Year	Chassis	Engine	Reg.	Model	Body	Conditions	Owner	Country	Page
Truks and other survived Kégresse									
1924				P28	armored car	unrestored	museum in Montevideo	Uruguay	UY 1
				Somua MCG		rolling chassis	Lane Motor Museum	USA	X 1
				Unic P107		unrestored	Moskow Park	Russia	X 2
				Unic P107		wreck	Rogaland Krigshistoriske Museum	Norway	X 3
1922				Somua MCL	restored	Fort de Fermont	France	X 4	
1924	12023			Rolls Royce Silver Ghost	restored	Gorki Leninskie Museum	Russia	X 5	
				Alfa Romeo RL	restored		Great Britain	X 6	
				Somua MCG5	restored	Musée des blindés	France	X 7	
				Unic P107	restored	Musée des blindés	France	X 8	
1925				Crossley Kégresse P4 T	restored	The history on wheels museum	Great Britain	X 9	
1939				Unic P107	restored, armoured car		MM Park France	France	X 10
				Unic P107	restored			France	X 11
				Unic P107	unrestored			France	X 12
				Somua MCG	unrestored			France	X 13
				Somua MCL	unrestored			France	X 14
				Unic P107	restored			France	X 15
				P107	wreck			France	X 16
				P107	Wreck			France	X 17
				Citroën P107	original		Citroen Automobiles	France	X 18
				Unic P107	restored		Musée de Neuvy-Grandchamp	France	X 19
				Unic P107	unrestored		Rogaland Krigshistoriske Museum	Norway	X 20
				Unic P107	restored			?	X 21
				Unic P107	restored		Lège-Cap-Ferret Pompier	France	X 22
				Somua MCG	restored		Réaup Pompier	France	X 23
				Somua MCL5	restored			France	X 24
				P107	unrestored			Holland	X 25
				Somua	under restauration			France	X 26
				P107	under restauration			France	X 27
				Somua	restored		Marxzell museum	Germany	X 28
				P107	wreck			?	X 29
				Somua MCG5	unrestored			Norway	X 30
				Unic P107	wreck		Rod Cadman	Great Britain	X 31
				Unic P107	unrestored		Paul Bouillé Collection	France	X 32
				Unic P107	unrestored, armoured		Paul Bouillé Collection	France	X 33
				Somua MCL5	Wreck		MM Park France	France	X 34
				Somua MCG	unrestored		MM Park France	France	X 35
1927				Crossley Kégresse		under restoretion	Royal Logistic Corps Museum	Great Britain	X 36

Régistre International des Véhicules à Systeme Kégresse

Year	Chassis	Engine	Reg.	Model	Body	Conditions	Owner	Country	Page
				Unic P107		unrestored, chassis	Laurent Vermont Desroches	France	X 37
Truks and other survived Kégresse									
				MC 23		wreck	Dresden museum	Germany	X 38
				Citroën P107		unrestored	Musée des blindés	France	X 39
				Somua MCG5		unrestored	MM Park France	France	X 40
				Unic P107		restored, armoured car	George Williamson	Great Britain	X 41
				P107		unrestored	MM Park France	France	X 42
				P107		unrestored	MM Park France	France	X 43
				P107		unrestored	MM Park France	France	X 44

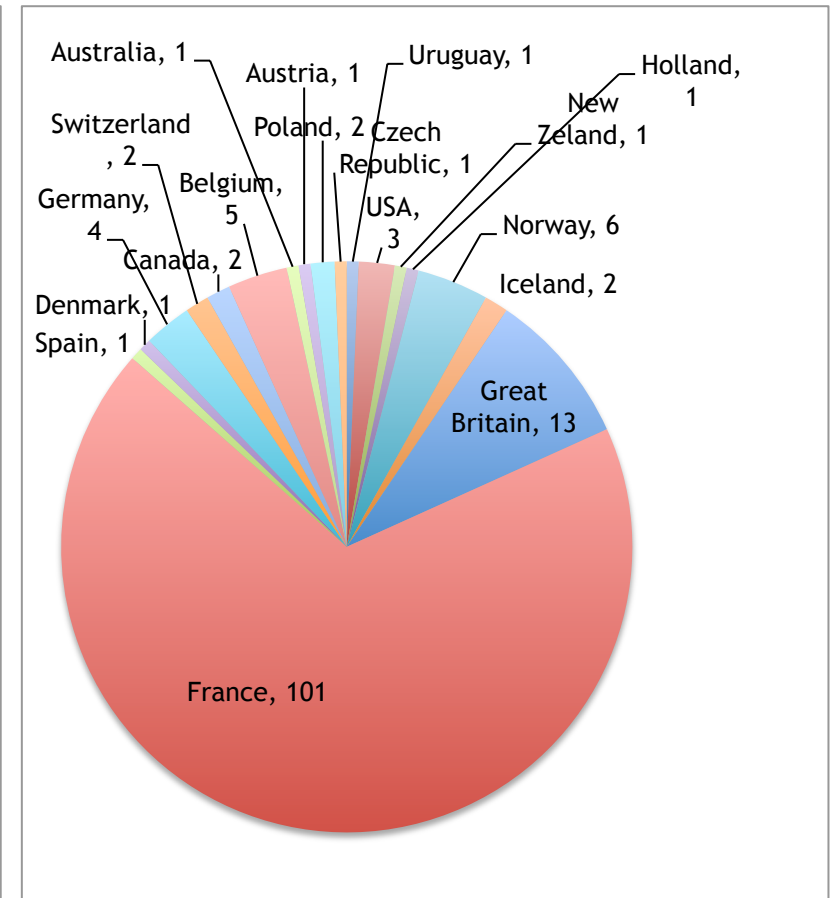
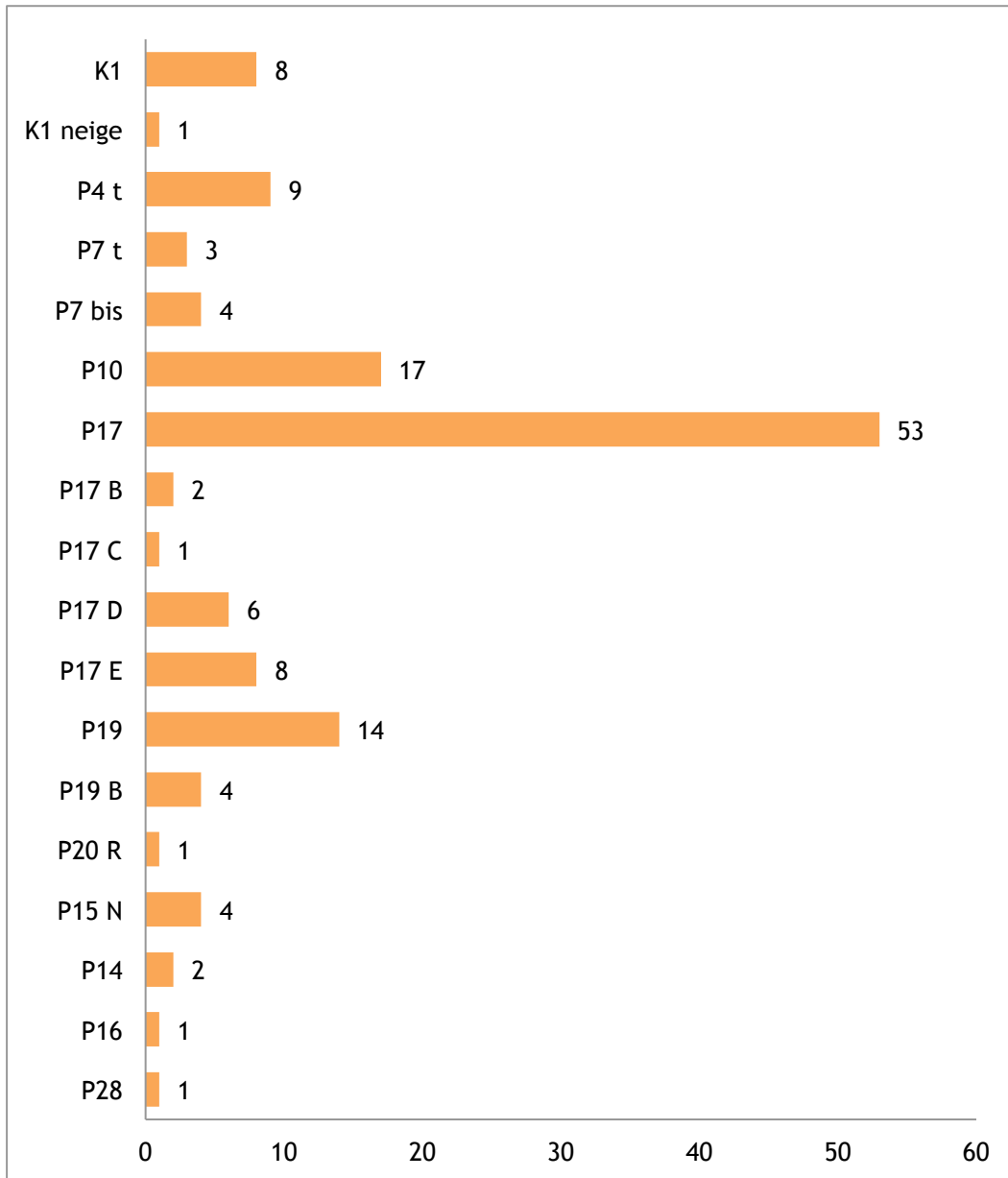
Régistre International des Véhicules à Systeme Kégresse

Others

C4	from a C4	running	Monaco car museum	Monaco	Z 1
C4	from a C4	running		France	Z 2
C4	from a C4	running		France	Z 3
C4	from a C4	running		France	Z 4
C4	from a C4	running		France	Z 5
5 hp	from a 5 hp	display	museum near Nice	France	Z 6

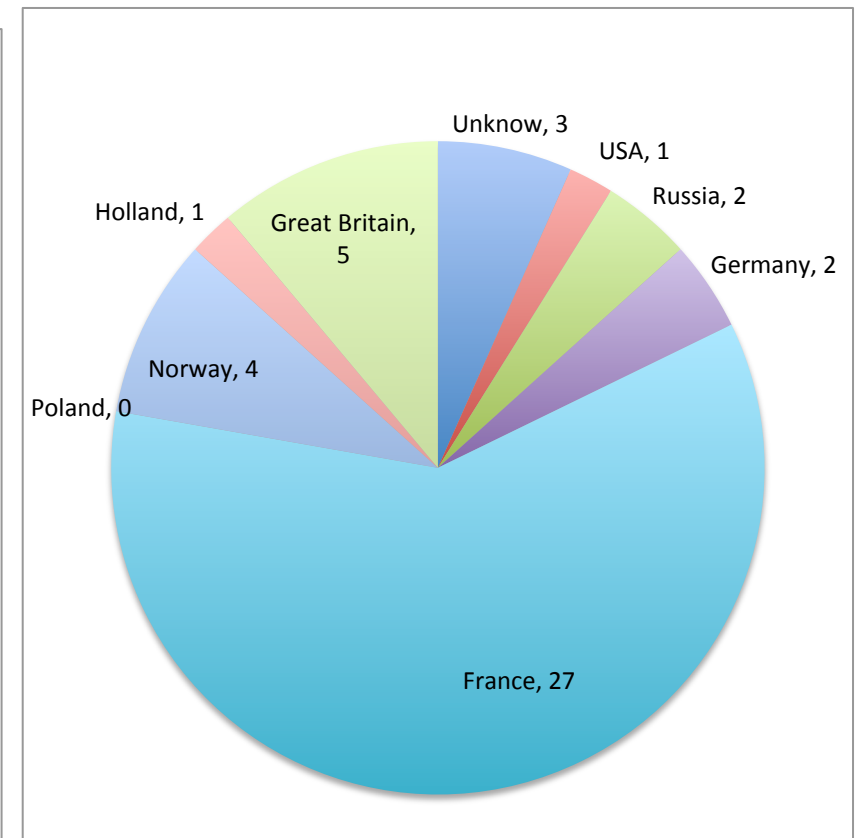
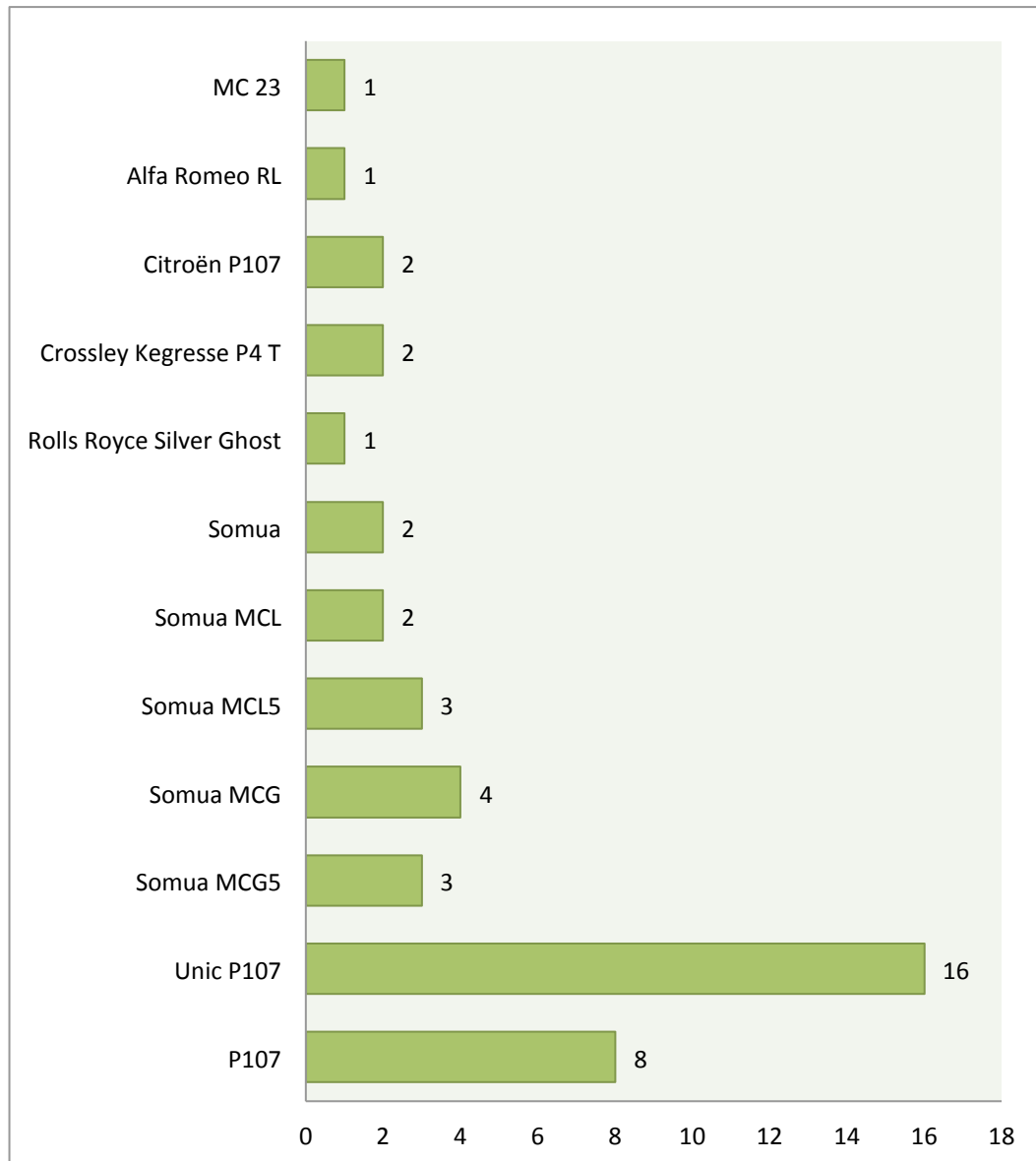
Régistre International des Véhicules à Systeme Kégresse

Statistic about Kégresse cars



Régistre International des Véhicules à Systeme Kégresse

Statistic about Kégresse trucks



Technische Museum Wien Austria

A 1

Model: P15N

Year:

Chassis:

Body: closed 9 seats

Reg:

www.technischesmuseum.at/museum/online-collection#sammlung/ui/%7B%22search%22%3A%22246202%22%7D/objectdetail/246202



Shayne Harris Australia

AU 1

Model: P4 T

Year:

Chassis: 1326

Body:

Reg:

www.kegresse.com



Musée Mahymobiles Belgium

B 1

Model: P17 E

Year: 1934

Chassis: 10992

Body: open tractor

Reg:

www.mahymobiles.be



Photo: www.citroen-ac4.fr/forum



Photo: Ivan Mahy



Photo: Ivan Mahy



Photo: Ivan Mahy

Musée Mahymobiles Belgium

B 2

Model: P17

Year: 1934

Chassis: 10063

Body: open tractor

Reg:

www.mahymobiles.be



Louis Erard Belgium

B 3

Model: P17

Year:

Chassis: 00065

Body: open tractor

Reg:



Royal Museum of the Army Belgium

B 4

Model: P19

Year:

Chassis:

Body:

Reg: 0406



Mr. Fontayne Belgium

B 5

Model: P17

Year:

Chassis:

Body: open tractor

Reg:



Reynolds Alberta Museum Canada

CAN 1

Model: P17 D

Year: 1934

Chassis: 10358

Body: open, "4 Painted Lady"

Reg:



Photo: www.flickr.com/photos/sherlock77/167129347



Photo: www.flickr.com/photos/sherlock77/167127685



Photo: www.flickr.com/photos/sherlock77/167129537



Photo: www.flickr.com/photos/sherlock77/167127846



Photo: www.flickr.com/photos/sherlock77/167129137



Photo: www.flickr.com/photos/sherlock77/166284425

Moose Jaw Western Development Museum Canada

CAN 2

Model: P17 D

Year: 1934

Chassis: 10360

Body: open, "5 Swallow Tail"

Reg:



Photo: WDM Photo

Château de Grandson Switzerland

CH 1

Model:

Year:

Chassis:

Body: open

Reg:



Photo: Bernt Erik Olsen

Unknow Switzerland

Model: P 17

Year: 1930

Chassis:

Body: open

Reg:



Unknow museum Czech Republic

CZ 1

Model: P19

Year:

Chassis: 1155

Body: open tractor

Reg:



Rüdiger Klein Germany

D 1

Model: P17 C

Year: 1933

Chassis: 10035

Body: closed tractor

Reg:



Museum Marxzell Germany

D 2

Model: P19

Year:

Chassis:

Body: open tractor with hardtop

Reg:



Unknow Germany

D 3

Model: P17

Year:

Chassis:

Body: open tractor

Reg:



Photo: Fahrzeuge-der-Wehrmacht.de

Gassmann GmbH Germany

D 4

Model: P17

Year:

Chassis:

Body: open

Reg:



Photo: Jens Møller Nicolaisen

Krybebånds Societets Denmark

DK 1

Model: P17 E

Year: 1934

Chassis: 10592

Body: open tractor

Reg:



Photo: Jens Nielsen



Photo: Jens Nielsen

Museum coches de cine Spain

E 1

Model: P17

Year: 1931

Chassis:

Body: touring

Reg:



Photo: www.panoramio.com/photo/5986470

MM Park France France

F 1

Model: P4T
Year: 1924
Chassis: 2261
Body:



Michelin Heritage France

Model: P17

Year: 1932

Chassis: 10976

Body: touring

Reg:

F 2



**Unknow
Unknow**

Model: P17

Year:

Chassis:

Body:



Automobiles Citroën France

F 4

Model: K1

Year: 1922

Chassis:

Body: open, "scarabée d'or"

Reg:



Photo: <http://grumit.citrina.it/CitroenKegresse/CitroenKegresse.html>



Photo: <http://grumit.citrina.it/CitroenKegresse/CitroenKegresse.html>



Photo: <http://grumit.citrina.it/CitroenKegresse/CitroenKegresse.html>



© Citroën 1922



Photo: <http://grumit.citrina.it/CitroenKegresse/CitroenKegresse.html>

Automobiles Citroën France

F 5

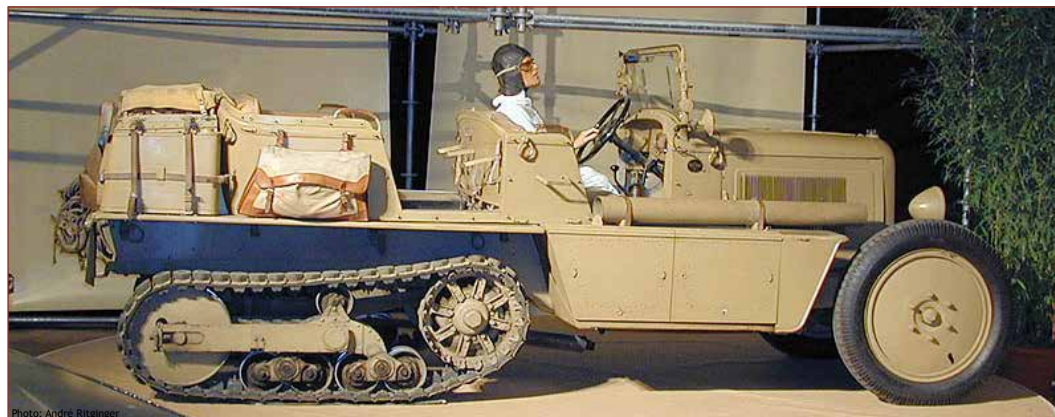
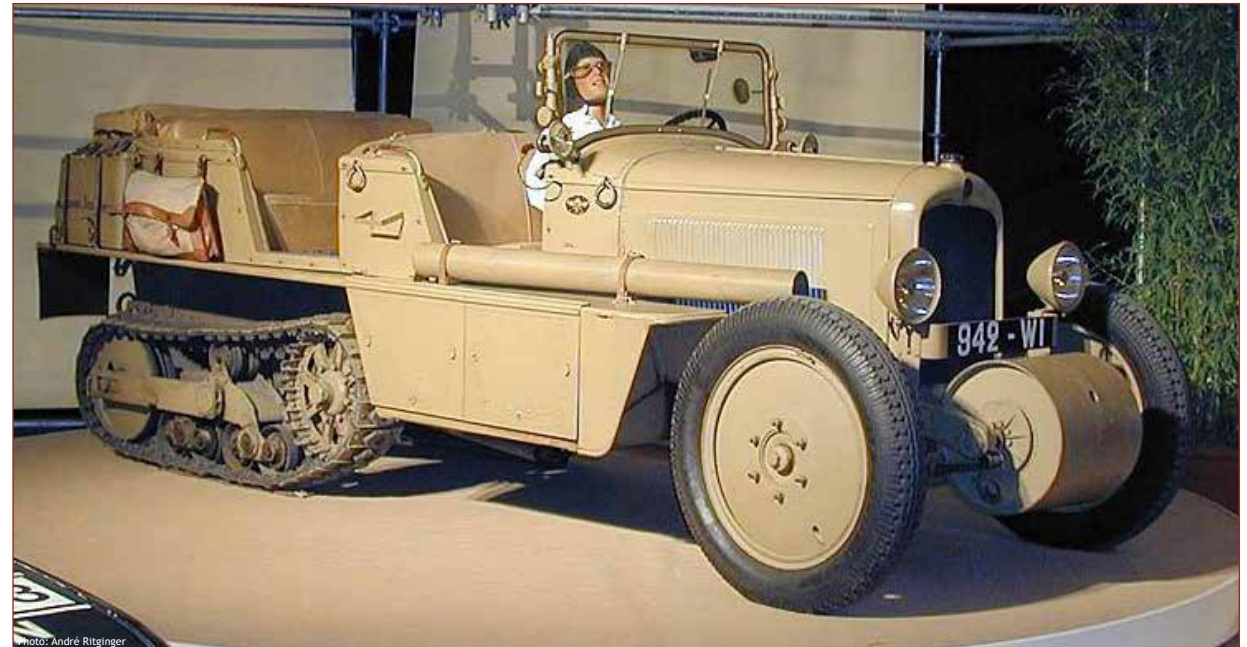
Model: P19 (C4 engine)

Year: 1930

Chassis:

Body: open

Reg: 942-W1



Michel Brunet

France

F 6

Model: P7 bis

Year: 1927

Chassis: 2601

Body: open

Reg:



Laurent Vermont Desroches France

F 7

Model: P17 E

Year:

Chassis: 11047

Body: open tractor

Reg: 80578



Normandy Retro Prestige France

F 8

Model: P4 T

Year: 1923

Chassis:

Body: open

Reg: 45 W1



Normandy Retro Prestige France

F 9

Model: P19 (C4 engine)

Year: 1930

Chassis:

Body: open

Reg: 848 W1



Photo: Michel Muller

Photo: Michel Muller

Photo: Michel Muller

Photo: Michel Muller

Musée de l'automobile de la Sarthe, Le Mans France

F 10

Model: P19 (C4 engine)

Year: 1930

Chassis:

Body: open, "Scarabée d'Or" Croisière Jaune

Reg: 942 W1

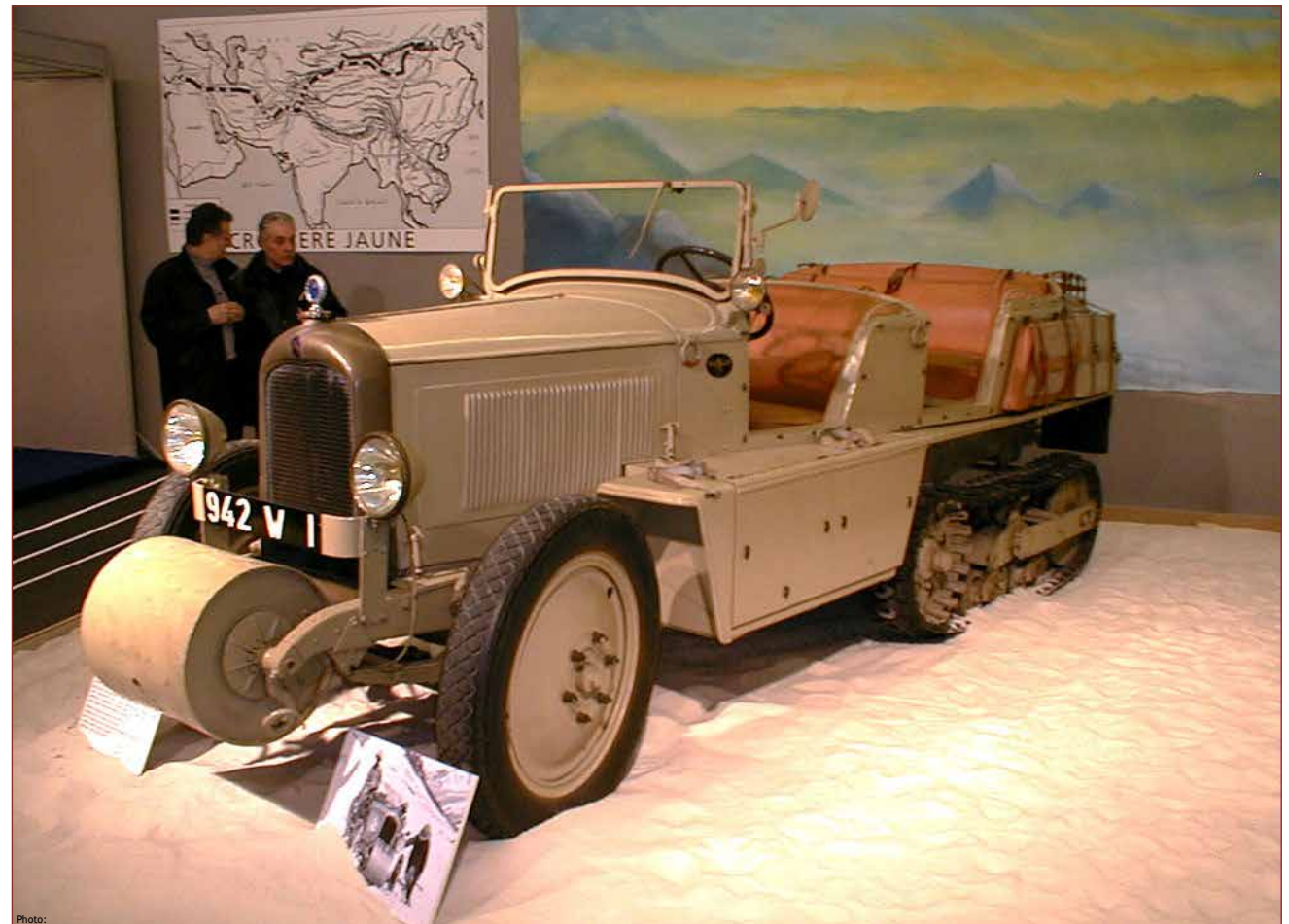


Photo:

André Prevost France

Model: P10

Year: 1929

Chassis: 6193

Body: open tractor

Reg:



F 11



Unknow France

F 12

Model:

Year:

Chassis:

Body:

Reg:



André Prevost France

Model: P17

Year:

Chassis:

Body: open tractor

Reg:

F 13



Photo: Per Nielsen



Photo: Per Nielsen



Photo: Per Nielsen



Photo: Peter Juel Jeppesen

Jacques Bienvenu France

Model: P17

Year:

Chassis: 10429

Body: closed tractor

Reg:



F 14



Yves-Richard Chaignon France

F 15

Model: P17 E

Year: 1932

Chassis: 11036

Body: open tractor

Reg: 82669



*Johan Warnesson
France*

F 16

Model: P10

Year:

Chassis:

Body: open tractor

Reg:



Photo:

Museum of Saint Jean d'Angély France

F 17

Model: K1

Year: 1922

Chassis:

Body: "Croissant d'Argent"

Reg:

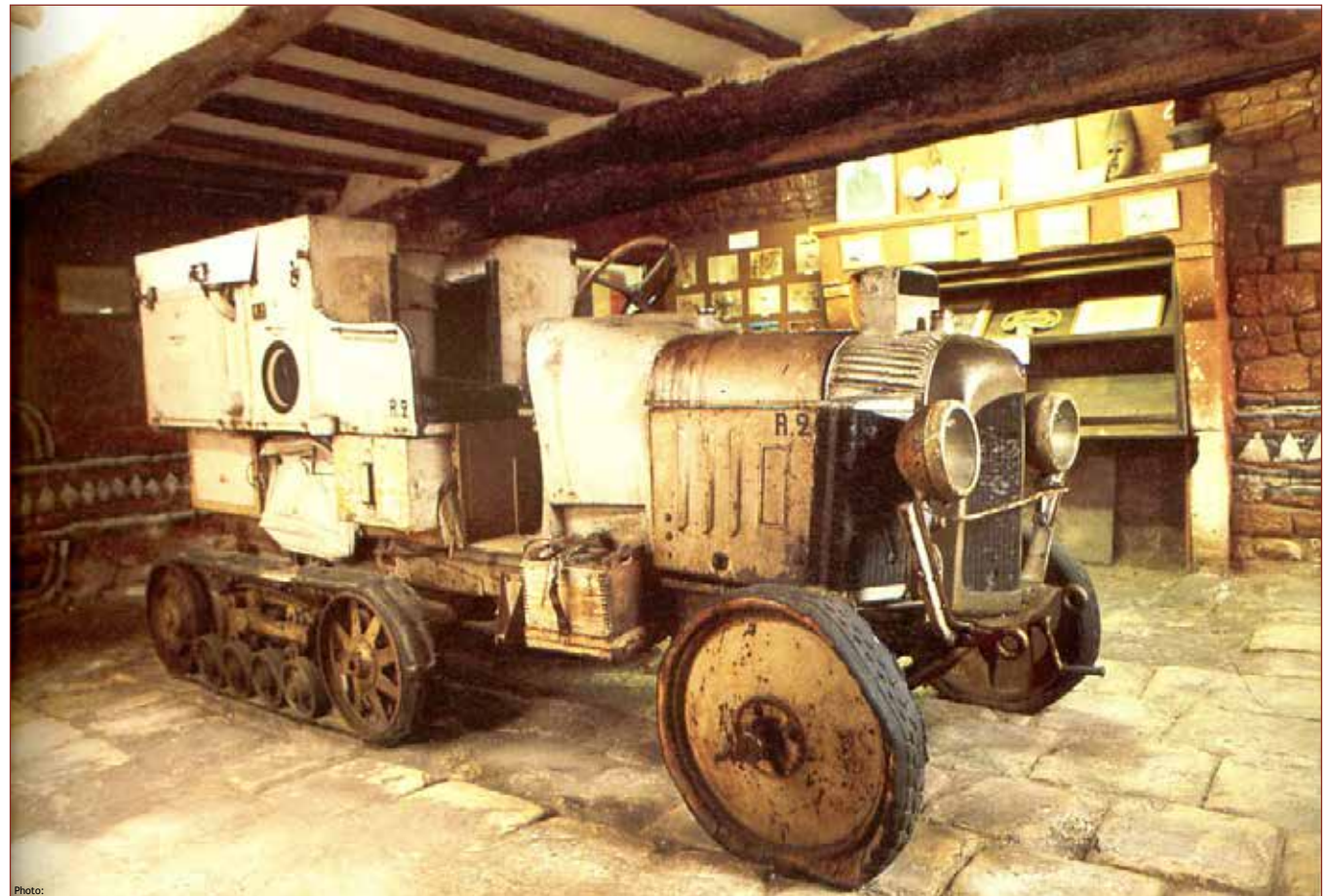


Photo:

Musée national de Compiègne France

F 18

Model: P4 T

Year:

Chassis:

Body: "Éléphant à la Tour"

Reg:



Photo: RWN - D. Arnaudet

Musée Malartre France

F 19

Model: P17
Year: 1932
Chassis:
Body: open
Reg: 842 W1



Unknown France

F 20

Model: P17

Year:

Chassis:

Body: open tractor

Reg: 616 EM 37



Musée des Blindes France

Model: P19

Year:

Chassis:

Body: open tractor

Reg:

F 21



Claude Bouchez France

Model: P17

Year:

Chassis:

Body: open

Reg:

F 22



Unknown France

Model: P19

Year:

Chassis:

Body: open tractor

Reg:

F 23



Unknown France

F 24

Model: P4 T

Year:

Chassis:

Body: open tractor

Reg:



Photo: Anton van Luljk



Photo: Anton van Luljk

***Xavier Garnier
France***

F 25

Model: P19 B

Year:

Chassis:

Body: open tractor

Reg:



Photo:

Gérard Ryngaert France

F 26

Model: P17 E

Year:

Chassis: 10567

Body: open tractor

Reg:



Louis Gay France

F 27

Model: P7 bis

Year:

Chassis:

Body: open

Reg: 338 AX 84



Dreux Museum France

F 28

Model: K1

Year: 1922

Chassis:

Body: open

Reg: 2283 W1



Dreux Museum France

F 29

Model: P10

Year: 1930

Chassis:

Body: open

Reg:



Unknown France

F 30

Model: P17

Year:

Chassis:

Body: open tractor

Reg: 2515 CE 78



Xavier Garnier France

F 31

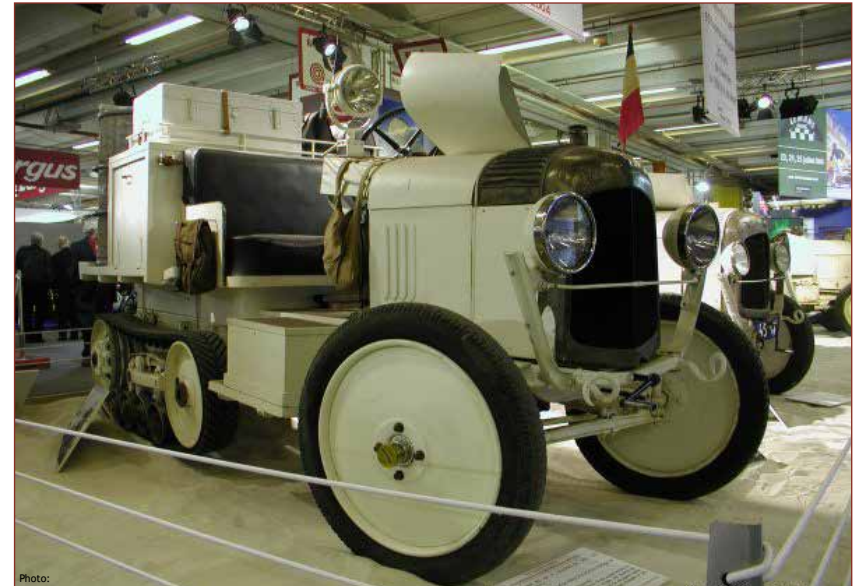
Model: P4 T

Year:

Chassis:

Body: open

Reg:



Xavier Garnier

France

F 32

Model: P19 B (C4 engine)

Year: 1931

Chassis: 9289

Body: open

Reg: 948 W1



Louis Gay France

F 33

Model: P7 T

Year: 1924

Chassis:

Body: open

Reg: 2284 W1



Louis Gay France

F 34

Model: P19

Year:

Chassis:

Body: open

Reg:



Jean Hérouard
France

F 35

Model: P17

Year:

Chassis:

Body: open tractor

Reg:



Photo: Jean Hérouard

Xavier Garnier

France

F 36

Model: P17 E

Year:

Chassis:

Body:

Reg:



Photo: <http://www.flickr.com/photos/citroenazu/sets/72157630468370486/>



Photo: <http://www.flickr.com/photos/citroenazu/sets/72157630468370486/>

Museum in Reims France

F 37

Model: P17 B

Year:

Chassis: 9657

Body: open tractor

Reg:



Photo: Michel Muller



Photo:

Laurent Vermont Desroches France

F 38

Model: P17

Year:

Chassis:

Body:

Reg:



Photo: Laurent Vermont Desroches



Photo: Laurent Vermont Desroches

Laurent Vermont Desroches

France

F 39

Model:

Year:

Chassis:

Body:

Reg:



Photo: Laurent Vermont Desroches

Laurent Vermont Desroches France

F 40

Model:

Year:

Chassis:

Body:

Reg:



Jose Dominquez
France

F 41

Model: P10

Year:

Chassis: 3152

Body:

Reg:

**Unknown
France**

F 42

Model:

Year:

Chassis: 6237

Body:

Reg:

Jean Francois Martin France

F 43

Model: P17

Year: 1932

Chassis:

Body: open tractor

Reg:



***Xavier Garnier
France***

F 44

Model: P17

Year:

Chassis:

Body: open

Reg: 942-W1



Citroën Automobiles France

F 45

Model: P7 T

Year:

Chassis:

Body: open tractor

Reg:



Louis Gay France

F 46

Model: P17

Year:

Chassis:

Body:

Reg:



Jacques Bienvenu France

F 47

Model: P17

Year:

Chassis:

Body: open tractor

Reg:



Photo: Jacques Bienvenu

Unknow France

F 48

Model: P10

Year:

Chassis:

Body:

Reg:

On sale LVA, may 2009

Unknow France

F 49

Model: P7 T

Year:

Chassis:

Body:

Reg:



Known owner
France

F 50

Model: P20 R

Year:

Chassis:

Body: bus

Reg:



Known owner
France

F 51

Model: P4 T

Year:

Chassis:

Body:

Reg:



***Known owner
France***

F 52

Model: K1 long chassis

Year:

Chassis:

Body:

Reg:



Photo: Eugenio Lai

***Known owner
France***

F 53

Model: K1 long chassis

Year:

Chassis:

Body:

Reg:



Photo: Eugenio Lai

Known owner
France

F 54

Model: K1 neige

Year:

Chassis:

Body:

Reg:



Antonie Momo France

F 55

Model: P10

Year:

Chassis: 7239

Body:

Reg:



Maxence Lebourg
France

F 56

Model: P17

Year:

Chassis:

Body:

Reg:



Known owner
France

F 57

Model: P15 N

Year:

Chassis:

Body:

Reg:



Photo: Eugenio Lai



Photo: Eugenio Lai

***Known owner
France***

F 58

Model: P14

Year:

Chassis:

Body:

Reg:



***Known owner
France***

F 59

Model: P16 amc

Year:

Chassis:

Body:

Reg:



Photo: Eugenio Lai

Unknow France

F 60

Model: P19 B

Year: 1932

Chassis: 19483

Body: open tractor

Reg:



Marie et Étienne Christian France

F 61

Model: P17 D

Year: 1934

Chassis: 10359

Body: open "1 Dingy Skipper"

Reg: 5602 W1



Xavier Garnier

France

F 62

Model: P17 D

Year: 1934

Chassis: 10356

Body: open "2 Orange Tip"

Reg:



Photo: Xavier Garnier

*Marie et Étienne Christian
France*

F 63

Model: P17 D

Year: 1934

Chassis: 10357

Body: open "3 Gatekeeper"

Reg:



Photo:

Laurent Vermont Desroches France

F 64

Model: P19

Year: 1931

Chassis:

Body: open tractor

Reg:



Photo: Laurent Vermont Desroches

Unknow France

Model:

Year:

Chassis:

Body: open tractor

Reg:

F 65



Photo: <http://vieuxboulons.e-monsite.com>



Photo: <http://vieuxboulons.e-monsite.com>



Photo: <http://vieuxboulons.e-monsite.com>

Unknow France

F 66

Model:

Year:

Chassis:

Body: open tractor

Reg: 5229 VL 45



Unknow France

F 67

Model:

Year:

Chassis:

Body: open tractor

Reg:



Photo: <http://10200images.fr>

Marc Coullard France

F 68

Model: P17

Year: 1930

Chassis: 7033

Body:

Reg:



Photo: Marc Coullard



Photo: Marc Coullard

*Jean Louis D.
France*

F 69

Model: P19

Year:

Chassis:

Body: open

Reg:



Photo: Xavier Garnier

Musée Automobile de la Commanderie France

F 70

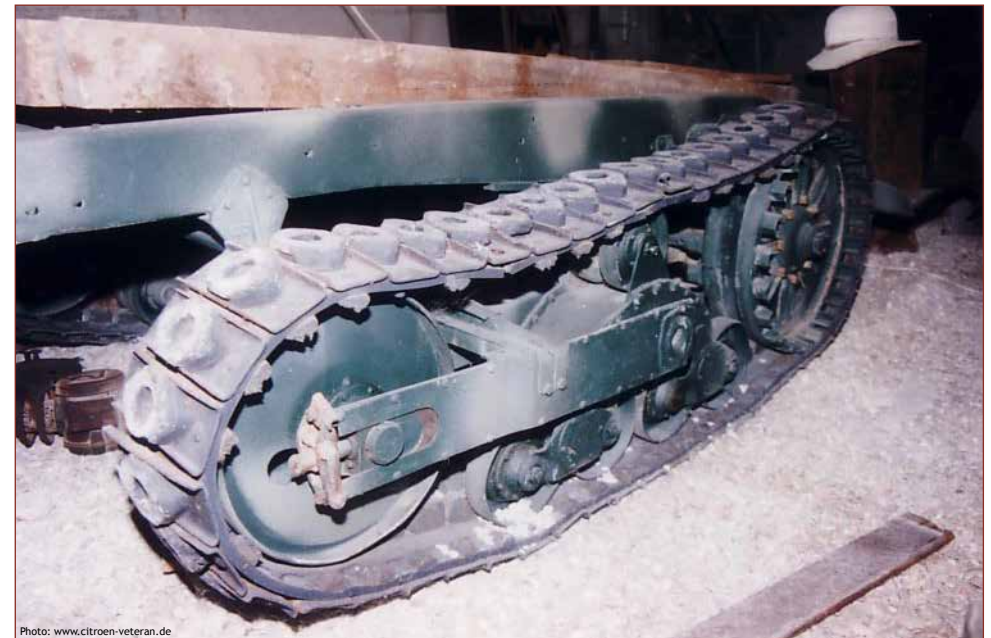
Model: P14 /P17

Year:

Chassis:

Body:

Reg:



Unknow France

F 71

Model:

Year:

Chassis:

Body:

Reg:



Salles Pompier France

F 72

Model: P17

Year:

Chassis:

Body: open

Reg: 7204 BK 33



Photo: TraXion



Photo: TraXion

MM Park France France

F 73

Model: P17

Year: 1932

Chassis: 9549

Body: open tractor

Reg:



MM Park France France

F 74

Model: P19 B

Year: 1931

Chassis: 9128

Body: open

Reg:



Maxence Lebourg

France

F 75

Model:

Year:

Chassis:

Body:

Reg:



Photo: Xavier Garnier



Photo: Xavier Garnier

mr. Verdun
France

F 76

Model: P 17

Year:

Chassis:

Body: open tractor

Reg:



Photo: Xavier Garnier

Bruno Kegresse France

F 77

Model: P17, C6 engine

Year:

Chassis:

Body: open

Reg:



Photo: Xavier Garnier

L'Atelier de Valentin France

F 78

Model: P10

Year: 1929

Chassis:

Body: open

Reg: 74391



Photo: L'Atelier de Valentin



Photo: L'Atelier de Valentin

Dominique Bouchard

France

F 79

Model: P17

Year: 1930

Chassis: 7268

Body:

Reg:



Michel Brunet
France

F 80

Model: K1

Year:

Chassis:

Body: open

Reg:



Musée des blindes, Saumur France

F 81

Model: P17

Year:

Chassis:

Body: open

Reg:



Unknow France

F 82

Model: P17

Year: 1932

Chassis: 7100

Body: open

Reg: 268 J 25



Aymeric Houzet

France

F 83

Model: P17

Year: 1929

Chassis:

Body:

Reg:



Photo: Aymeric Houzet

Unknow France

F 84

Model: P17

Year:

Chassis:

Body:

Reg:



MM Park France France

F 85

Model: K1

Year:

Chassis:

Body:

Reg:



MM Park France France

F 86

Model: P19 B

Year: 1931

Chassis: 8917

Body:

Reg:



Photo: LBC



Photo: LBC



Photo: Arjan Oosterhof



Photo: Arjan Oosterhof



Photo: LBC

Benoit Larue
France

F 87

Model: P10
Year: 1929
Chassis: 6149
Body:
Reg:



Photo: Benoit Larue

Xavier Garnier

France

F 88

Model: K1

Year:

Chassis:

Body:

Reg:



Photo: Xavier Garnier



Photo: Xavier Garnier

MM Park France France

F 89

Model: P10

Year:

Chassis:

Body:

Reg:



Xavier Garnier

France

F 90

Model: P 19

Year:

Chassis:

Body: torpedo

Reg:



Photo: Xavier Garnier



Photo: Xavier Garnier

Unknow France

F 91

Model: P 17

Year:

Chassis:

Body: open tractor

Reg:



Laurent Vermont Desroches

France

F 92

Model: P 17 Diesel

Year:

Chassis:

Body:

Reg:



Unknow France

F 93

Model: P 19

Year:

Chassis:

Body: closed

Reg:



Unknow France

F 94

Model: P 17

Year:

Chassis:

Body:

Reg:



Unknow France

F 95

Model: P 17

Year:

Chassis:

Body:

Reg:



Photo: Gauthier.C



Photo: Gauthier.C



Photo: Gauthier.C

Unknow France

F 96

Model: P 17

Year:

Chassis:

Body:

Reg: 79866



Photo: Bertrand de Lamotte

Unknow France

F 97

Model: P17

Year:

Chassis:

Body: open

Reg:



Photo: France 40



Photo: France 40

L'Atelier de Valentin France

F 98

Model: P17

Year:

Chassis:

Body: open

Reg: 76568



Sylvian Tardivat *France*

F 99

Model: P17

Year: 1930

Chassis:

Body: open

Reg:



Photo: Sylvian Tardivat

Unknow France

F 100

Model: P17

Year:

Chassis:

Body: open

Reg:



Gills Martel France

F 101

Model: P17

Year:

Chassis: 11411

Body: open

Reg:



Photo: Finn Lyster

National Motor museum Great Britain

GB 1

Model: P10

Year: 1929

Chassis:

Body: open

Reg: SM 7802



Photo:

***Museum in Yorkshire
Great Britain***

GB 2

Model:

Year:

Chassis:

Body:

Reg:

William Balfour Great Britain

GB 3

Model: P17 E

Year:

Chassis: 11173

Body: Shooting brake

Reg:



Photo: William Balfour

Alan Stewart Great Britain

GB 4

Model: P17

Year: 1929

Chassis: 7095

Body: Shooting brake

Reg: TS 9379



Anthony Buxton Great Britain

Model: P7 bis
Year: 1924 ca.
Chassis: 4392
Body:
Reg:

GB 5



Anthony Buxton Great Britain

GB 6

Model: P17

Year: 1930

Chassis:

Body:

Reg:

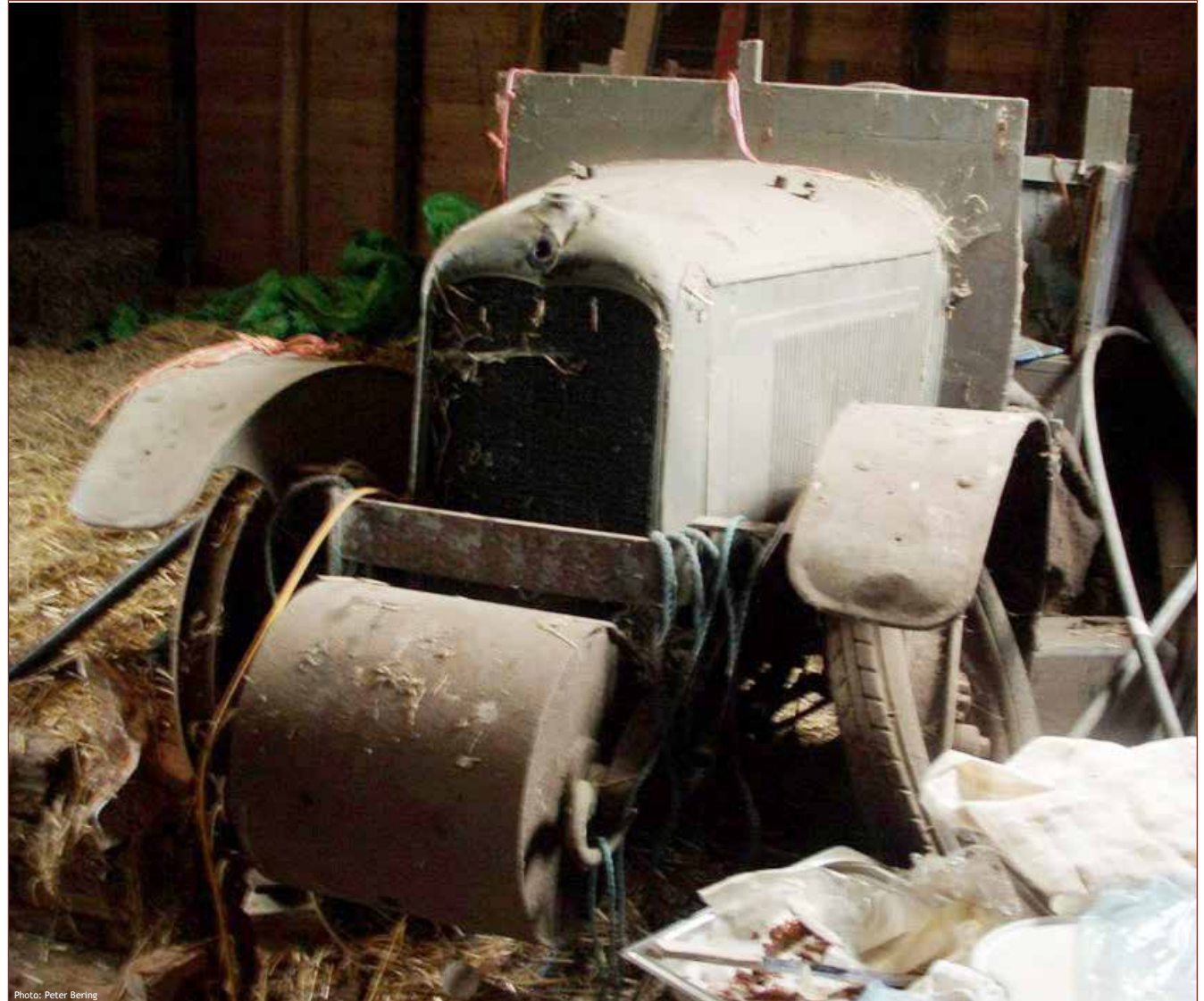


Photo: Peter Bering

Unknow Great Britain

GB 7

Model: P10

Year:

Chassis:

Body: open

Reg: VV 2034



Unknow Great Britain

GB 8

Model: P4 T

Year:

Chassis:

Body:

Reg:



The history on wheels museum Great Britain

GB 9

Model:

Year:

Chassis:

Body: open

Reg:



Photo: Robin Buckland



Photo: Robin Buckland

Kevin Wheatcrofts Great Britain

GB 10

Model: P17 D

Year: 1934

Chassis: 10353

Body: touring

Reg:



*Pictures from
Lost Empires, 1984*



Photo: The Wheatcroft collection

Kevin Wheatcrofts Great Britain

GB 11

Model: P17

Year: 1930

Chassis: 7218

Body: closed tractor

Reg:



Unknow Great Britain

GB 12

Model: P17

Year:

Chassis:

Body:

Reg:

Seen in Duxford Military Vehicle Rally 1970s by Richard.Crockett.
From film *Indiana Jones Raiders of the Lost Ark* 1981 and From film *Biggles* 1986



Unknow Great Britain

GB 13

Model: P17

Year:

Chassis:

Body:

Reg:



Skógar Museum Iceland

Model: P15 N

Year:

Chassis:

Body: closed 9 seats

Reg:



IS 1



Photo: Flemming Jensen



Photo: Flemming Jensen

Icelandic Road Museum Iceland

IS 2

Model: P15 N

Year:

Chassis:

Body: closed 9 seats

Reg:



Photo: Jakob Hálfðanarson



Photo: Jakob Hálfðanarson

Henrik Rosenlid Norway

N 1

Model: P17 E

Year:

Chassis: 10561

Body:

Reg:



Henrik Rosenlid Norway

N 2

Model: P17

Year:

Chassis:

Body:

Reg:

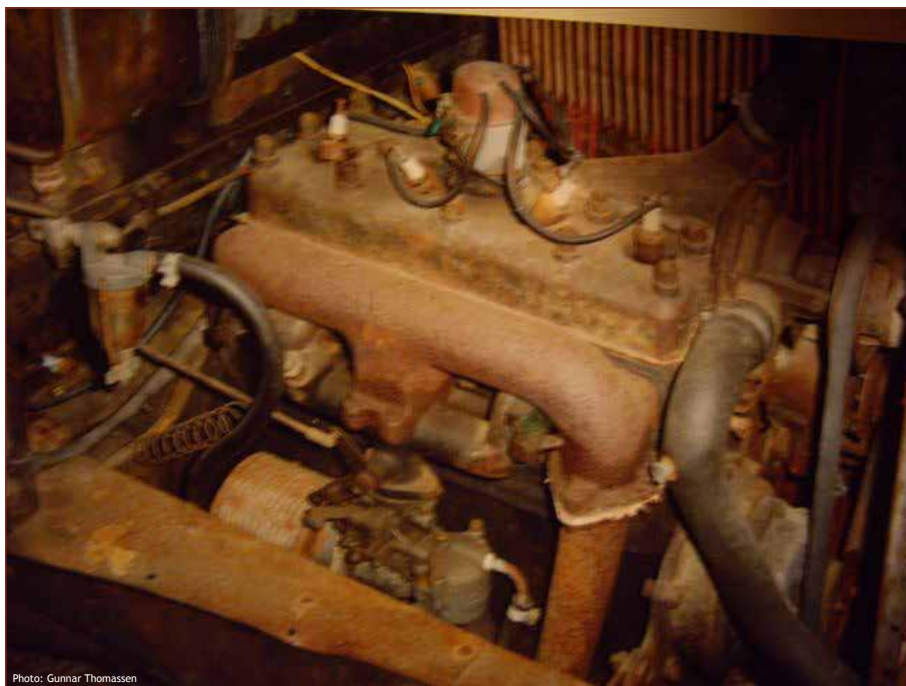


Photo: Gunnar Thomassen



Photo: Gunnar Thomassen

Gunnar Thomassen

Norway

N 3

Model: P17

Year:

Chassis: 10995

Body:

Reg:



Photo: Gunnar Thomassen

Gunnar Thomassen
Norway

N 4

Model: P17

Year:

Chassis:

Body:

Reg:

Knud Hetlelid Norway

N 5

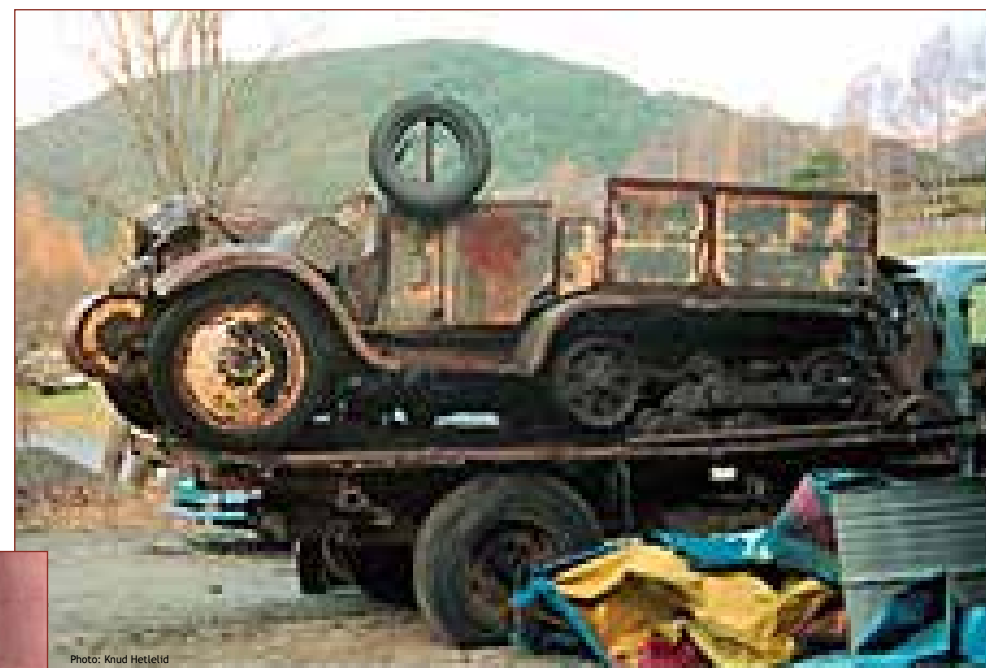
Model: P17

Year:

Chassis:

Body:

Reg:



Unknown Norway

Model:

Year:

Chassis:

Body:

Reg:

N 6



Unknow Holland

NL 1

Model: P17

Year:

Chassis:

Body:

Reg: WL-171



Bruce Williams New Zealand

NZ 1

Model: P10

Year: 1929

Chassis:

Body: open

Reg:



Photo: Damian Mahon



Photo: Damian Mahon



Photo: Damian Mahon



Photo: Damian Mahon

Sebastian Draga Poland

PL 1

Model: P19

Year:

Chassis:

Body:

Reg:



Polish Army Museum Poland

PL 2

Model: P17

Year: 1928

Chassis:

Body: open tractor

Reg:



Tampa Bay Automobile Museum Florida

USA 1

Model: P19

Year:

Chassis:

Body: open tractor

Reg:



Photo: Per Nielsen



Photo: <http://www.flickr.com/photos/daveseven/229503230/>

**Unknow
Unknow**

*Model: P7 bis
Year: 1929
Chassis:
Body: open
Reg:*



Photo: <http://www.auctionsamerica.com>



Photo: <http://www.auctionsamerica.com>



Photo: <http://www.auctionsamerica.com>

Unknow USA

USA 3

Model: P 17

Year:

Chassis:

Body: open tractor

Reg:



Museum Uruguay

UY 1

Model: P28

Year:

Chassis:

Body: Armoured Car

Reg:



Lane Motor Museum Usa

X 1

Model: Somua MCG

Year:

Chassis:

Body: rolling Chassis

Reg:



Photo:



Photo:

Photo: Mark Brown

Moskow park

Russia

Model: Unic P107

Year:

Chassis:

Body:

Reg:

X 2



Rogaland Krigshistoriske Museum Norway

X 3

Model: Unic P107

Year:

Chassis:

Body:

Reg:



Photo: Rogaland Krigshistoriske Museum



Photo: Rogaland Krigshistoriske Museum

Fort de Fermont France

X 4

Model: Somua MGCL 5

Year:

Chassis:

Body:

Reg:



Gorki Leninskie Museum Russia

X 5

Model: Rolls Royce Silver Ghost

Year: 1922

Chassis: 79 YG

Body: open tourer

Reg:



Photo: Harvey Schmidt

Unknow Great Britain

X 6

Model: Alfa Romeo RL

Year: 1924

Chassis: 12023

Body: Tourer

Reg:



Musée des blindés France

X 7

Model: Somua MCG5

Year:

Chassis:

Body:

Reg:



Musée des blindés France

X 8

Model: Unic P107

Year:

Chassis:

Body:

Reg:



Photo: <http://forum.axishistory.com/viewtopic.php?t=84920>



Photo: <http://forum.axishistory.com/viewtopic.php?t=84920>



Photo: <http://forum.axishistory.com/viewtopic.php?t=84920>

The history on wheels Museum Great Britain

X 9

Model: Crossley Kegresse P4 T

Year: 1925

Chassis:

Body:

Reg:



Photo: <http://www.thehistoryonwheelsmuseum.co.uk>



Photo: www.rexfeatures.com

shop.rexfeatures.com

MM Park France France

X 10

Model: Unic P107

Year: 1939

Chassis:

Body: armored car

Reg:



Photo: Douglas Wilkinson

Unknow France

X 11

Model: Unic P107

Year:

Chassis:

Body:

Reg:



Photo: Eugenio Lai



Photo: Eugenio Lai



Photo: Eugenio Lai

Unknow France

X 12

Model: Unic P107

Year:

Chassis:

Body:

Reg:



Known owner
France

X 13

Model: Somua MCG

Year:

Chassis:

Body:

Reg:



Known owner France

X 14

Model: Somua MCL

Year:

Chassis:

Body:

Reg:



***Known owner
France***

X 15

Model: Unic P107

Year:

Chassis:

Body:

Reg:



Photo: Eugenio Lai

Unknow France

X 16

Model: P107

Year:

Chassis:

Body:

Reg:



Unknow France

X 17

Model: P107

Year:

Chassis:

Body:

Reg:



Photo: <http://freeforumzone.leonardo.it>

Automobiles Citroën France

X 18

Model: P107

Year:

Chassis:

Body: closed truck

Reg:



Photo: Citroën

Musée de Neuvy-Grandchamp France

X 19

Model: Unic P107

Year:

Chassis:

Body: closed

Reg:



Photo: from LVA Nr. 1378



Rogaland Krigshistoriske Museum Norway

X 20

Model: Unic P107

Year:

Chassis:

Body:

Reg:



Unknow Unknow

X 21

Model: Unic P107

Year:

Chassis:

Body:

Reg:



Photo: <http://lesffl.xooit.fr/t1446-UNIC-P-107.htm>



Photo: <http://lesffl.xooit.fr/t1446-UNIC-P-107.htm>

Lège-Cap-Ferret Pompier France

X 22

Model: Unic P107

Year:

Chassis:

Body:

Reg:



Réaup Pompier France

X 23

Model: Somua MGC

Year:

Chassis:

Body:

Reg:



Unknow France

X 24

Model: Somua MGL5

Year: 1939

Chassis:

Body:

Reg:



Photo: <http://minitracks.forumperso.com/t6222-rencontre-en-septembre-avec-vehicules-francais>



Photo: <http://minitracks.forumperso.com/t6222-rencontre-en-septembre-avec-vehicules-francais>

Unknow Holland

X 25

Model: P107

Year:

Chassis:

Body:

Reg:



Unknow France

X 26

Model: Somua MCG

Year:

Chassis:

Body:

Reg:



Unknow France

X 27

Model: P107

Year:

Chassis:

Body:

Reg:



Photo: <http://atf40.forumculture.net/13699-resto-citrono-kegresse>

Museum Marxzell Germany

X 28

Model: Somua

Year:

Chassis:

Body:

Reg:



Unknow Unknow

Model: P107

Year:

Chassis:

Body:

Reg:



Rogaland Krigshistoriske Museum Norway

X 30

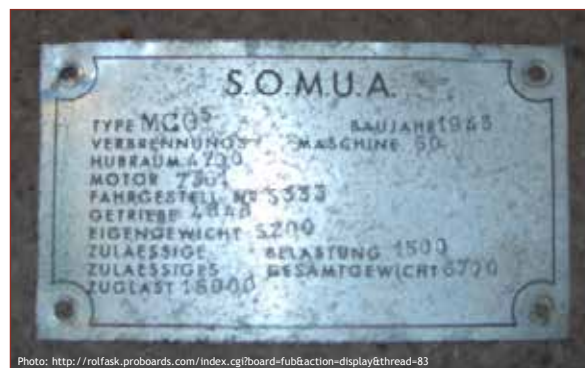
Model: Somua MCG 5

Year:

Chassis:

Body: closed

Reg:



Rex & Rod Cadman Collection

Great Britain

X 31

Model: Unic P107

Year:

Chassis:

Body:

Reg:



Paul Bouillé Collection

France

X 32

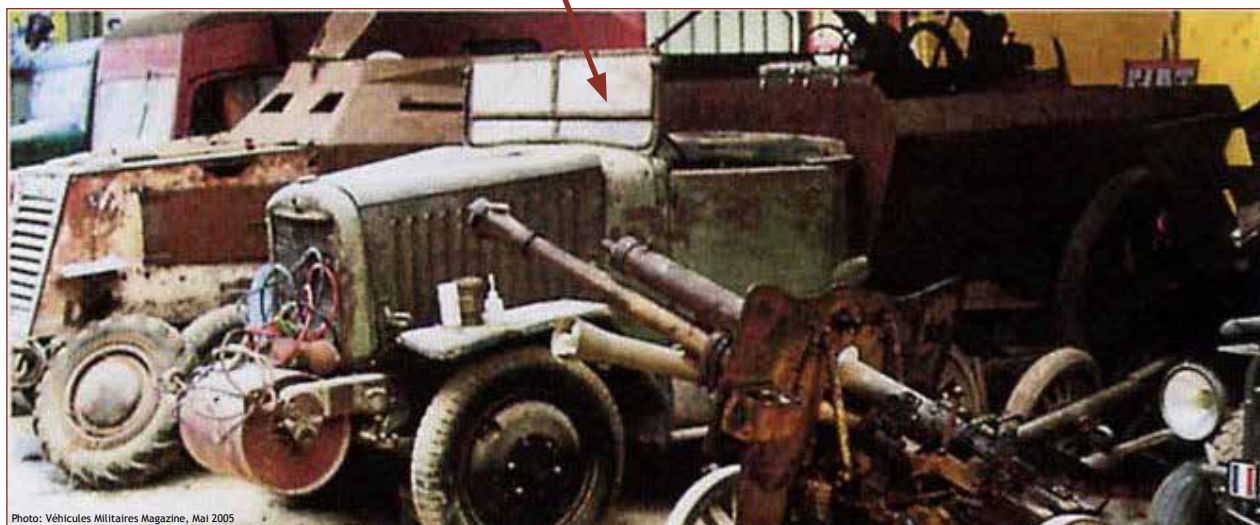
Model: Unic P107

Year:

Chassis:

Body:

Reg:



Paul Bouillé Collection

France

X 33

Model: Unic P107

Year:

Chassis:

Body: armoured

Reg:

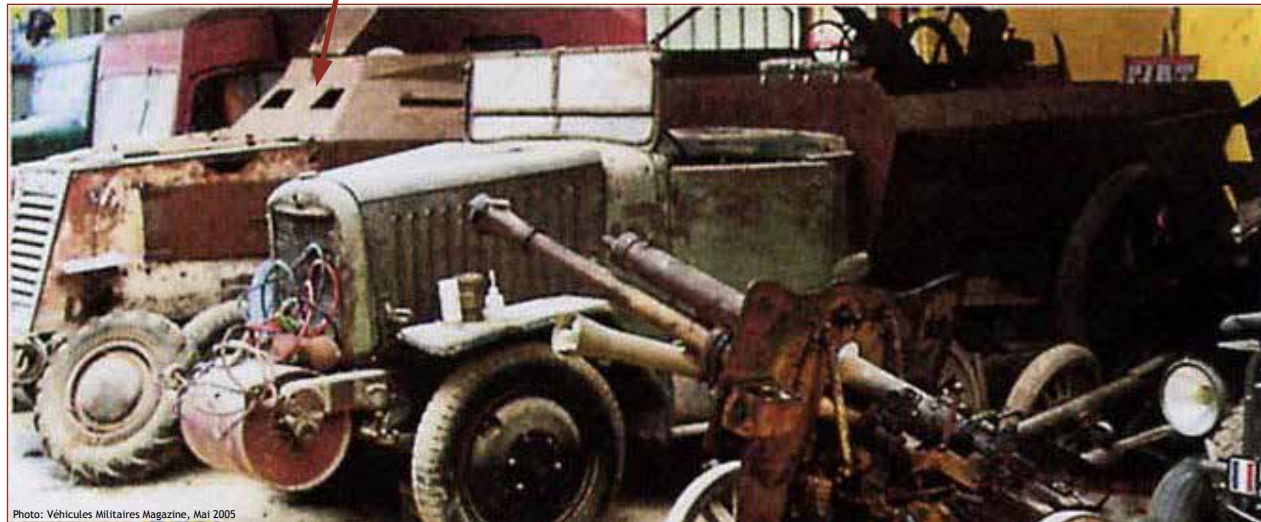


Photo: Véhicules Militaires Magazine, Mai 2005

MMA Park France France

X 34

Model: Somua MCL5

Year:

Chassis:

Body:

Reg:



MM Park France France

X 35

Model: Somua MCG

Year:

Chassis:

Body:

Reg:



Royal Logistic Corps Museum Great Britain

X 36

Model: Crossley Kegresse P4T

Year: 1927

Chassis:

Body:

Reg:



Laurent Vermont Desroches *France*

X 37

Model: Unic P107

Year:

Chassis:

Body:

Reg:



Dresden museum
Germany

X 38

Model: MC 23

Year:

Chassis:

Body:

Reg:



Musée des blindés France

X 39

Model: Citroën P 107

Year:

Chassis:

Body:

Reg:



Photo: France 40 Vehicule

MM Park France France

X 40

Model: Somua MCG5

Year:

Chassis:

Body:

Reg:



George Williamson Great Britain

X 41

Model: Unic P107

Year:

Chassis:

Body: Armoured

Reg:



MM Park France France

X 42

Model: P107

Year:

Chassis:

Body:

Reg:



MM Park France France

X 43

Model: P107

Year:

Chassis:

Body:

Reg:



MM Park France France

X 44

Model: P107

Year:

Chassis:

Body:

Reg:



Monaco Cars Museum Monaco

Model: C4 modified for film recordings

Year:

Chassis: C4

Body: C4

Reg:



Z 1



From the TV serie *La cloche tibétaine*, 1973

Museum in Briare France

Z 2

Model: C4 modified for film recordings

Year:

Chassis: C4

Body: C4

Reg:



From the TV serie La cloche tibetaine, 1973

Unknow France

Z 3

Model: C4 modified for film recordings

Year:

Chassis: C4

Body: C4

Reg:



From the TV serie La cloche tibetaine, 1973

Unknow France

Z 4

Model: C4 modified for film recordings

Year:

Chassis: C4

Body: C4

Reg:



From the TV serie La cloche tibetaine, 1973

Unknow France

Z 5

Model: C4 modified for film recordings

Year:

Chassis: C4

Body: C4

Reg:



Photo: from www.leboncoin.fr



Photo: from www.leboncoin.fr



Photo: from www.leboncoin.fr

From the TV serie *La cloche tibetaine*, 1973

Museum near Nice France

Z 6

Model: 5 hp

Year:

Chassis: 5 hp

Body: 5 hp



